

62

Fall 1958

Bu

LIBRARIAN, U.S. DEPT. OF AGRI.
WASHINGTON, 25, D.C.

BULK RATE
U. S. POSTAGE
PAID
RICHMOND 16, VA.
Permit No. 142



LIBRARY
RECEIVED
★ OCT 3 1958 ★
U. S. Department of Agriculture

ALL BULBS
LISTED IN
THIS CATALOG
WILL BE SENT
POSTPAID

BULBS For Fall Planting

T. W. WOOD & SONS
RICHMOND, VIRGINIA

SEPTEMBER, 1958

Wood's Grass Seeds for Lovely Lawns

1 lb. Sows 200 sq. ft. (10x20) of New Lawn; or Reseeds 400 sq. ft. (20x20). 100 lbs. an Acre

Wood's Fine Lawn Grass Mixtures Are the Best Obtainable Anywhere. Always Ask for "Wood's Lawn Grass Mixtures." There is Nothing Better

SELECTING THE SEED

A good turf requires a combination of different grasses. These must be the best turf forming varieties. Wood's Lawn Grasses contain only the best of these that have been fully tested in our own and government laboratories. Only those with the highest purities and germination are used. You can depend on "Wood's Quality."

Wood's Evergreen Lawn Grass

For a general purpose lawn there is nothing superior to this mixture. Based on our formula, in use for seventy years, it contains Kentucky Blue Grass, Bent Grass, Poa Trivialis, Chewings and Creeping Red Fescue, Red Top and a small percentage of White Dutch Clover. Merion Blue Grass is included in the mixture. A very reliable mixture. Nothing better for Piedmont, Mountain and Northern sections.

Wood's Super-Green Lawn Grass

For the particular home owner who takes a keen interest in his lawn, we have prepared this special mixture. There is nothing better obtainable at any price. It is a blend of super-quality Bent Grass, Kentucky Blue Grass, Poa Trivialis, Red Top, Chewings and Creep Red Fescue and Merion Blue Grass.

Wood's Winter-Green Lawn Grass

Sow in the fall on established lawns for a vigorous green growth all winter and spring, when most grasses are dormant.

LAWN GRASSES

	—Prices Per Lb. F.O.B. Richmond—					—Postpaid Prices—			
	100 lbs.	25 lbs.	10 lbs.	5 lbs.	1-lb.	25 lbs.	10 lbs.	5 lbs.	1 lb.
EVERGREEN	\$.84	\$.87	\$.90	\$.92	\$.95	\$23.25	\$9.75	\$5.10	\$1.25
SUPER-GREEN	1.23	1.26	1.30	1.32	1.35	33.00	13.75	7.10	1.65
SHADY PARK89	.92	.95	.97	1.00	24.50	10.25	3.35	1.30
EMERALD PARK61	.63	.66	.68	.70	17.25	7.35	3.90	1.00
MAYFAIR37	.38	.39	.40	.45	11.00	4.65	2.55	.75
WINTER-GREEN28	.30	.32	.33	.35	9.00	3.95	2.15	.65

WHITE DUTCH CLOVER—1/2-lb. bag, 60¢; 1-lb. bag, \$1.15. Postpaid, 1/2-lb. bag, 85¢; 1-lb. bag, \$1.45.

Wood's Shady Park Lawn Grass

Few grasses thrive without sunlight. Our mixture of grasses adapted to shade under trees and around the house, forms a fine soft lawn. Chewings and Creeping Red Fescue, Poa Trivialis, Highland Bent, Kentucky and English Blue Grass, Red Top, Perennial Rye Grass and White Clover. Under trees sow thicker and apply twice as much fertilizer and water.

Wood's Emerald Park Lawn Grass

A high quality, inexpensive blend with wide adaptation to soil, climate, sun and shade, for permanent year 'round home lawns, large areas, parks, athletic fields, etc. It has English and Kentucky Blue Grass, White Dutch Clover, Red Top, Poa Trivialis, Kentucky, Chewings and Creeping Red Fescue, and Domestic and Perennial Rye Grass gives it quick growth that stays green all winter.

Wood's Mayfair Lawn Grass (Registered)

A blend of high quality turf grasses and White Dutch Clover to produce good permanent year 'round lawn at the lowest possible cost. It contains Perennial and Domestic Rye Grass to quickly establish new lawns and stay green all winter, with Blue Grass, Fescues and Red Top for permanent lawn the rest of the year.

Wood's Giant May-Flowering Tulips

TOP SIZE BULBS—GROWN IN HOLLAND

These gorgeous new late or May-Flowering Tulips are very stately and beautiful, producing immense flowers on tall, sturdy stems, and beautiful globular flowers of remarkably heavy texture in a large range of colors. They embrace almost every conceivable tint in rose, heliotrope, claret, maroon, crimson, and other rich and rare shades. Unsurpassed for bedding and cutting. Letter after variety denotes class of Tulip: (C) Cottage; (D) Darwin; (B) Breeder.

GROUP I—3 for 40¢; \$1.30 per Dozen; \$7.95 per 100

AFTERGLOW (D). 24 inches. A cup-shaped flower of clear dark salmon, edged light orange. This excellent variety makes a gorgeous effect if planted in masses with blue ground cover.

BARTIGON (D). 24 inches. Fiery crimson with white base; very strong grower. One of the best in this color.

BLEU AIMABLE (D). 25 inches. A strong and long lasting Tulip of exquisite deep lavender color. Excellent for cutting.

CARRARA (C). 22 inches. Pure white with ivory anthers. Large globular flower. An outstanding variety.

CLARA BUTT (D). 22 inches. Clear salmon-pink; a beautiful and charming bedding Tulip.

CUM LAUDE (C). 26 inches. Large, bright purple blue with ivory-white center. Oval shaped flower of faultless form on a tall stem. A wonderful bedding variety.

DESIREE (D). 26 inches. Sparkling scarlet cinnabar red. A very large early Tulip.

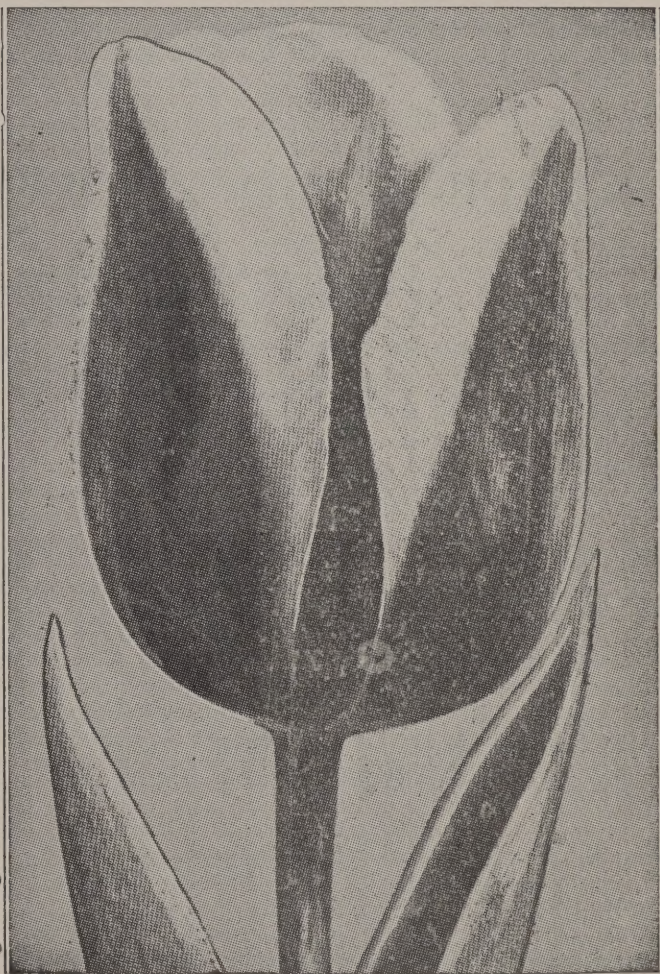
FARNCOMBE SANDERS (D). 26 inches. Scarlet, with a rosy gloss; broad petaled flowers of perfect shape.

FLAMING BEAUTY (C). 24 inches. Remarkable new Tulip, golden yellow with red stripes. Very striking and attractive.

GOLDEN AGE (D). 26 inches. Deep yellow, inside slightly lighter; yellow base and yellow anthers. Large flowers of true Darwin shape, on tall, strong stem. An outstanding variety.

GOLDEN HARVEST (C). 26 inches. One of the best and most popular golden yellow Tulips, both for garden and forcing.

INGLESCOMBE YELLOW (C). 20 inches. Clear golden yellow. One of the best May-flowering; has given universal satisfaction.



LEMON QUEEN (C). 26 inches. Magnificent variety of recent introduction, producing large flowers of erect habit; color a lovely pale yellow self, anthers yellow with slightly deeper yellow base.

OSSI OSWALDA (C). 24 inches. A striking new novelty of creamy white, edged rose, resembling Picotee, changing by the day until at its height a pure rose.

PRIDE OF HAARLEM (D). 26 inches. Brilliant American Beauty red; most popular Darwin, sweet scented.

WOOD'S GIANT MAY-FLOWERING TULIPS—Continued

PRINCESS ELIZABETH (D). 24 inches. Clear, deep pink, changing to rose-pink. A well shaped flower, giving it added attraction.

PRINCESS MARGARET ROSE (C). 22 inches. Deep buttercup-yellow with bright red margin.

SCOTCH LASSIE (D). 26 inches. Pure deep lavender with darker shade on inside and dark blue base. Will last three to four weeks in the garden.

SCARLET LEADER (D). 26 inches. It's name expresses its appearance perfectly. Color is of beautiful fiery scarlet without any markings.

QUEEN OF THE NIGHTS (D). 26 inches. The darkest black of all black Darwins. Most outstanding of all the black Tulips.

YELLOW GIANT (D). 26 inches. Has always been a grand golden yellow Tulip until superseded by newer introductions. Color golden-yellow with black anthers; flowers are fairly large.

WOOD'S SPECIAL MIXED DARWIN TULIPS. This mixture is composed entirely of good blooming varieties of named Darwin Tulips. It contains a great variety of colors and shades. \$1.00 per dozen; \$6.25 per 100.

GROUP II. 3 for 50¢; \$1.40 Per Dozen; \$9.00 Per 100

ARISTOCRAT (D). 30 inches. Enormous, strong and tall Tulip, soft purplish, violet-rose, lighter edge. Really an aristocrat.

DEMETER (D). 26 inches. One of the largest Darwins ever seen, carrying an enormous violet flower.

ECLIPSE (D). 26 inches. Glowing deep blood red with white margined dark blue base. An elegant, very attractive large flower.

INSURPASSABLE (D). 26 inches. Lovely lilac, turning slightly lighter towards edges. Very large flower of great substance. Far superior to William Copeland.

MARSHALL HAIG (C). 28 inches. Bright scarlet red with small yellow base. A beautiful Tulip.

MR. VAN ZYL (D). 26 inches. This Tulip reminds one of the favorite Rosabella, but is of deeper color. Has long-lasting qualities and a fine strong stem. One of the choicest pinks.

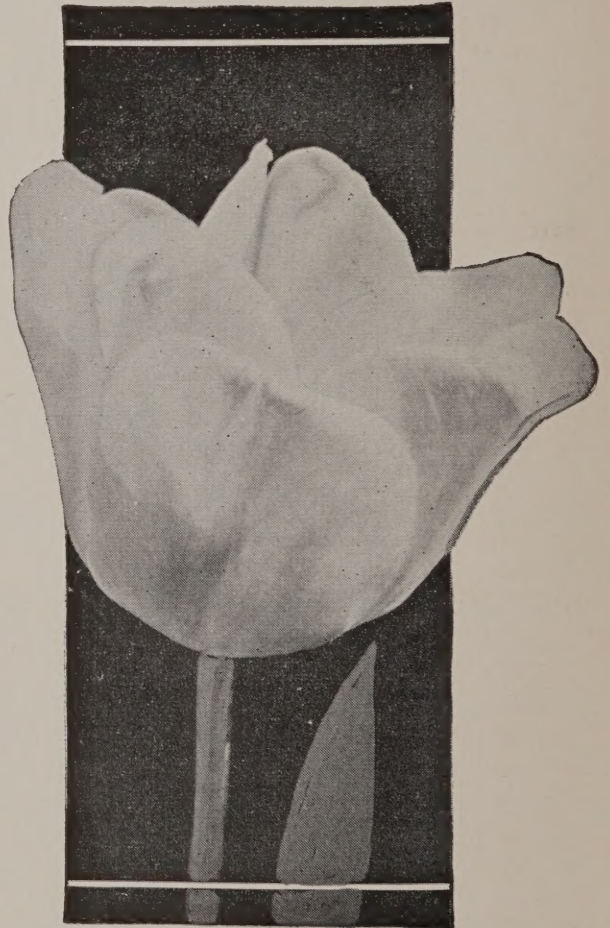
MRS. JOHN T. SCHEEPERS (C). 24 inches. Pure yellow with yellow anthers. A giant flower on a tall, sturdy stem. The largest and best yellow Tulip.

MRS. MOON (C). 24 inches. This is beyond a doubt one of the finest late yellow Tulips, vase-shaped, with pointed petals, distinctly perfumed.

NIPHETOS (D). 26 inches. A glorious soft yellow flower with lighter base and anthers, the reflexing petals are of a remarkable texture. The flower is carried on a strong, erect stem.

PRIDE OF ZWANENBURG (D). 26 inches. Very pleasing old rose, turning lighter towards the edges; inside pink, with base and purplish black anthers. Very large, attractive flower of great merit.

RED SUPREME (D). 24 inches. Brilliant Scarlet; a giant Darwin on very tall, strong stem; a very beautiful Tulip.



GROUP II—Continued: 3 for 50¢; \$1.40 Per Dozen; \$9.00 Per 100

ROSY WINGS (C). 24 inches. Gloriously large, gracefully tapering, elongated, bright rose flower with rosy lilac sheen; inside brilliant rosy coral with creamy white base and black anthers. Very early; blooms about the same time as advance and Darwin Demeter. Superb Tulip of great beauty.

SCARLET O'HARA (D). 26 inches. Outstanding scarlet variety, probably the best in its color. Strong grower, one of the largest.

SMILING QUEEN (C). 26 inches. Beautifully formed oval shaped flowers of clear rose-pink, edged silvery rose; inside brighter rose with white base and yellow anthers.

THE BISHOP (D). 26 inches. A very tall variety with medium size cup of a lively tone of purple. Fawn colored on reverse side of the petals and a white interior base, black anthers.

WHITE GIANT (D). 26 inches. One of the best pure white Tulips. Black anthers.

WILDLUST (Glacier) (D). 26 inches. Pure white; white base with yellow anthers; long oval flower of gigantic size with lasting qualities. The largest white Tulip.

ZWANENBURG (D). 26 inches. Erect pure white flowers, borne on a strong stem. A very noble Tulip of great beauty. Highly recommended for bedding.

GROUP III. SPECIAL MERIT TULIPS

3 for 60¢; \$1.50 Per Dozen; \$10.00 Per 100

CITY OF HAARLEM (D). 26 inches. Very large, brilliant vermilion-scarlet with a satiny sheen; inside fiery scarlet with dark blue base and white halo. One of the best of its color and most popular for garden and cutting.

GOLD COAST (D). 26 to 28 inches. Deep buttercup yellow. New variety.

LOUIS XIV (B). 28 inches. Rich purple with an edge of golden bronze, producing a fine blending of tone. Immense flower and a great favorite.

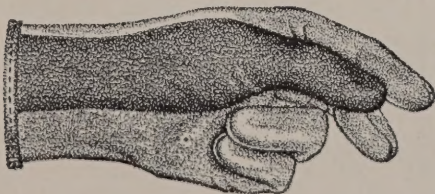
PORT ELIZABETH (D). 26 inches. A large flower of fiery red, flushed cerise; a very fine Tulip.

QUEEN OF SHEBA (C). 24 inches. Glowing brownish red, edged with orange; a new cottage Tulip of the lily flowering type; very large flowers.

SWEET HARMONY (D). 24 inches. Considered as a very outstanding Tulip. Light yellow, edged white—a never seen color. It has a large flower on a long erect stem; splendid and long lasting.

TANTALUS (B). 28 inches. Outer petals dull lilac on yellow ground, passing to yellow towards edges. Inside is the yellow color predominating. Very large cup-shaped flower on tall stem.

Green Thumb Garden Glove



Actual Green Thumbs on smartly styled gloves of chamois-colored fabric. Vinylimpregnated to repel all dirt and will wear several times longer than good canvas gloves. Washable, practical, economical for gardening, dusting, painting, etc. Three sizes: Small-Medium-Large for ladies.

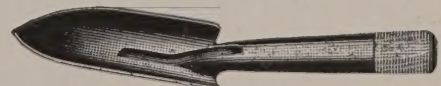
No. 150 large only, for men. By mail postpaid, \$1.15. Not postpaid, 98¢.

No. 800 Garden Trowel



A well balanced tool for use in any garden or greenhouse. Made of 18-gauge steel with turned hardwood handle. By mail postpaid, 45¢. Not postpaid, 25¢.

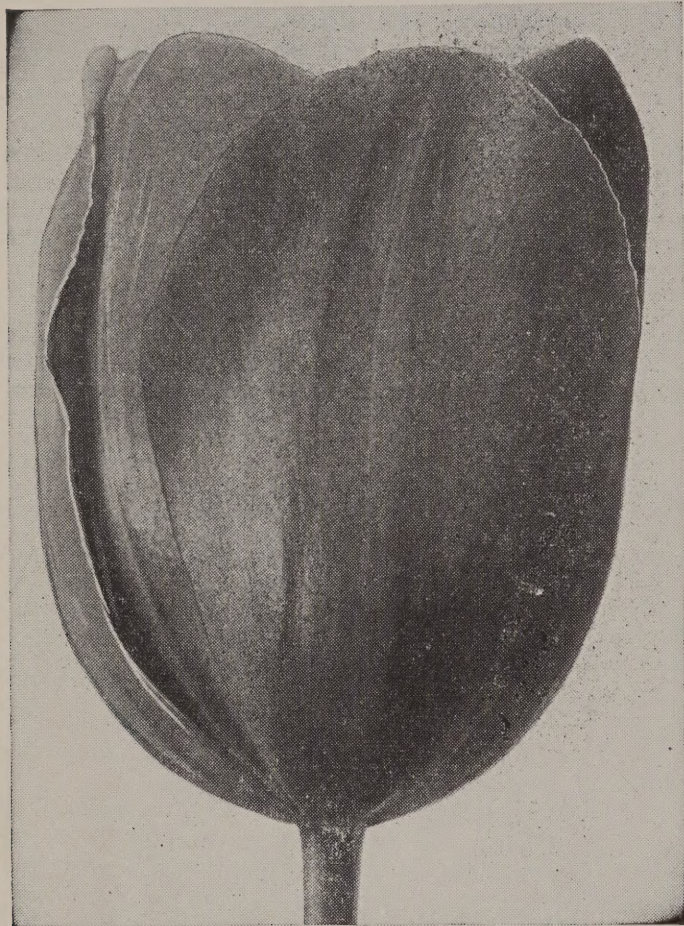
No. 804 Transplanter



A narrow trowel expressly made for transplanting purposes. By mail postpaid, 45¢. Not postpaid, 25¢.

Darwin Hybrid Tulips

A new race of Tulips, the results of crossings between Darwin Tulips and Fosteriana varieties. They have enormous flowers on strong stems and vivid colors. Stock limited.



GENERAL EISENHOWER. 24 inches. Orange-red flower of enormous size. This variety promises to be the most beautiful Tulip in the future. 3 for 70¢; \$1.90 per dozen; \$12.00 per 100.

ROOSEVELT. Clear orange-red, extra large, well formed flower. 3 for 75¢; \$2.25 per dozen; \$15.00 per 100.

HOLLAND GLORY. 24 inches. This is the most perfect, the largest and strongest of all Tulips. There is no other variety with such a beautiful warm dazzling scarlet color. It won the highest awards on all exhibitions of the last few years. It is a cross between Red Emperor and Advance, combining the good qualities of both. 3 for 75¢; \$2.25 per dozen; \$15.00 per 100.

GUDOSHNICK. 26 inches. Yellow, spotted red. When fully open flower is 8½ inches across. Foliage of this variety exceptionally attractive, green spotted with gray. 3 for 75¢; \$2.25 per dozen; \$15.00 per 100.

SPRING SONG. 24 inches. A spectacular new variety of a brilliant scarlet color. Enormous large flowers on tall, strong stems. One of the biggest hits of the last decade. 3 for 60¢; \$1.50 per dozen; \$10.00 per 100.

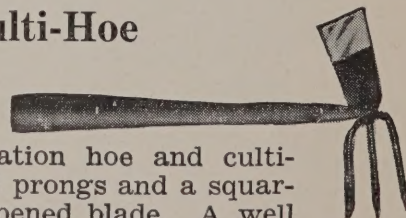
APELDOORN. 24 inches. Orange-scarlet, base black, edged yellow. This is one of the newest Tulips in existence and is a cross between Tulip Red Emperor and a new red Darwin Tulip variety. Perhaps the largest Tulip on the market today, and of most striking color. 3 for 60¢; \$1.50 per dozen; \$10.00 per 100.

DOVER. 24 inches. Fiery poppy-red, very large flower, beautiful black center with yellow border. Fully open, 8 inches across. 3 for 70¢; \$1.90 per dozen; \$12.00 per 100.

EMPIRE STATE. 26 inches. The largest and tallest of all Darwin hybrids. A cross of the Darwin Red Pitt and Fosteriana Red Emperor. Tomato red with yellow base tinged with green. 3 for 70¢; \$2.25 per dozen; \$15.00 per 100.

SPRINGTIME. Scarlet red with black base. Actual measurements of the flower is twice the size of most Darwin Tulips. The length of the petals are 3 inches or more and when fully open, measure 7 to 8 inches in diameter. 3 for 70¢; \$1.85 per dozen; \$12.00 per 100.

Culti-Hoe



A combination hoe and cultivator. Has 3 prongs and a squared end sharpened blade. A well made and serviceable tool that will do a variety of work and will add pleasure to gardening. By mail postpaid, \$1.00. Not postpaid, 75¢.

Late Double Tulips—PEONY FLOWERED

They are May-flowering Tulips and represent almost an entirely new group. Much time has been devoted to the production of new colors and the result has been the creation of very beautiful varieties. 20 inches to 24 inches in height.

3 for 50¢; \$1.40 Per Dozen; \$9.00 Per 100

CHERRY BLOSSOM. Cherry-red with broad creamy-white edge. Very attractive. Enormous full double flowers.

EROS. Very large, substantial flowers of a clear old rose color. One of the best doubles under cultivation and will certainly command attention when flowering in the garden.

SYMPHONIA. Brilliant rosy carmine with blue base. Very large double flower on tall, strong stem.

MOUNT TACOMA. Resembling a large, double white Chinese Peony. Immense large flowers, which are produced on fairly tall, strong stems.

ROYAL YELLOW. Very large, deep golden yellow. One of the best double yellows.

NIZZA. A remarkable and striking double colored Tulip; yellow with red stripes, very unusual color.

Botanical Tulips

The following Tulips are all wild species. They are beautiful and will be highly appreciated by lovers of hardy bulbous plants. Their right place is the rock garden, where their flowers are seen to advantage.

CLUSIANA (The Lady Tulip). 8 inches. A charming little Tulip, outer petals cherry red with inner petals white; violet base. Plant in a warm and sheltered position. 3 for 50¢; \$1.40 per dozen; \$9.00 per 100.

FOSTERIANA (Red Emperor). 22 inches. Positively the most beautiful Tulip under cultivation; it produces colossal blooms on erect, strong stems; color is fascinating and is of the loveliest shade of glowing scarlet imaginable; base yellowish. Very sturdy grower. Strongly recommended. 3 for 60¢; \$1.50 per dozen; \$10.00 per 100.

FOSTERIANA PURISSIMA (White Emperor). 22 inches. Milky white, the only white Fosteriana variety. Very much like the famous Red Emperor but in a delicate white. 3 for \$1.00; \$3.50 per dozen; 25 for \$6.50; \$24.00 per 100.

KAUFMANNIANA (Waterlily Tulip). 6 inches. A charming species, producing in March large flowers of elegant form and remarkable beauty, opening out to a great size in the sun; color soft creamy white, center slightly marked with carmine-red; strongly recommended for planting in groups in borders and in rock gardens. 3 for 50¢; \$1.40 per dozen; \$9.00 per 100.

JOHANN STRAUSS. 12 inches. Pure white, outside blotched with red. 3 for 50¢; \$1.40 per dozen; \$9.00 per 100.

KAUFMANNIAN ELLIOTT. 15 inches. An improved "Waterlily Tulip" producing long-shaped, clear red flowers with white borders. A nice and attractive new variety with a fine orange-yellow center. 3 for 50¢; \$1.40 per dozen; \$9.00 per 100.

CHRYSANTHA. 6 inches. A pretty little species similar to *Tulipa Clusiana*. Color yellow with red on outside of outer petals. Recommended. 3 for 35¢; \$1.00 per dozen; \$6.00 per 100.

EICHLERI. 11 inches. A very beautiful species with fairly large blooms of a lovely crimson-scarlet color and a glistening base, golden margined. 3 for 40¢; \$1.25 per dozen; \$7.00 per 100.

MARJOLETTI. 18 inches. Producing pretty little flowers of a creamy-white flaked with pink. Very fine for cutting. 3 for 50¢; \$1.40 per dozen; \$9.00 per 100.

TURKESTANICA. 10 inches. Miniature Tulip, many flowered white, yellow center; a lovely rock garden bulb. 3 for 50¢; \$1.40 per dozen; \$9.00 per 100.

New Parrot Tulips

Top Size—Grown In Holland

The New Parrot Tulips are a great improvement upon the older family. They are all of free flowering and erect habit. We strongly recommend them to Tulip lovers and same are now within the reach of every garden.

ADMIRAL DOORMAN. 24 inches. Cherry red, edged with golden yellow. 3 for 50¢; \$1.40 per dozen; \$9.00 per 100.

BLACK PARROT. 24 inches. A rare and unique purple-black flower, gracefully borne on strong, erect stems. 3 for 45¢; \$1.30 per dozen; \$8.00 per 100.

BLUE PARROT. .26 inches. A noble flower of old rose, turning lighter towards the edges, inside reddish pink, with base and purplish black anthers. Very large. 3 for 45¢; \$1.30 per dozen; \$8.00 per 100.

DISCOVERY. Violet pink with silvery edge; sport of the well known Darwin Princess Elizabeth; medium tall growing. 3 for 50¢; \$1.40 per dozen; \$9.00 per 100.

FANTASY. 24 inches. A remarkably beautiful Parrot sport of the famous Clara Butt Tulip; color beautiful soft rose with faint stripes and featherings of apple-green on outer petals. The flowers expand to an enormous size and attract great attention. Of very free-flowering habit, highly recommended. 3 for 45¢; \$1.30 per dozen; \$8.00 per 100.

FIREBIRD. A sport of Parrot Fantasy with all the good habits of this popular variety, but in an intense vermillion-red color, with green markings on the outside. A wonderful new Parrot. 3 for 45¢; \$1.30 per dozen; \$8.00 per 100.

ORANGE PARROT. 20 inches. Dark orange with faint markings of old gold. Very strong stem, which holds the colossal flower upright. Undoubtedly the best Parrot in this color. An amazing novelty. 3 for 50¢; \$1.40 per dozen; \$9.00 per 100.

PARROT WONDER. 28 inches. Cherry-red. Very large flower on a strong stem. Sport of Darwin Pride of Haarlem. 3 for 45¢; \$1.40 per dozen; \$8.00 per 100.

TEXAS GOLD (Parrot). 26 inches. Clear, bright yellow flowers with a narrow red edge which suffuses slightly deeper into the petals as they are. Beautiful, heavily lacinated, enormous flowers of unusual beauty. 3 for 50¢; \$1.40 per dozen; \$9.00 per 100.

VIOLET QUEEN. 24 inches. Another new Parrot of enormous size on a strong and robust stem, with wide open fringed and crenulated flowers and of a beautiful violet color. 3 for 45¢; \$1.30 per dozen; \$8.00 per 100.

PEACOCK TULIPS

12 inches. This is a new race of Tulips, outstanding by its very striking colors. Contains all the colors of the rainbow. Special attention should be taken of their colorful hearts and their striped and colored foliage. Flowering time, early April. Very substantial and long lasting. Mixed colors only. 3 for 70¢; \$1.75 per dozen; \$12.00 per 100.

Rembrandt Tulips

These are Darwin Tulips which have broken into a permanent variegation or diversity of colors. They flower at the same time as the Darwin Tulips, but have a little shorter stem and smaller flowers.

3 for 50¢; \$1.40 Per Dozen; \$9.00 Per 100

CORDELL HULL. 24 inches. Carmine-red, with white stripes and blotches. Sport of Darwin Bartigon.

AMERICAN FLAG. 30 inches. Deep red with broad white lines, blue base.

MONTGOMERY. 24 inches. White sport of Bartigon, with a narrow red edge, which spreads over the flower.

Lily Flowering Tulips

These Tulips belong to the Cottage Tulip family and bloom at the same time. Their distinct shape, more or less resembling Lilies, made it desirable to group them under a separate head. They are splendid for groups in borders and are very artistic cutflowers.

ALASKA. 24 inches. Golden yellow, large elongated flower with pointed petals; sweet scented. 3 for 50¢; \$1.35 per dozen; \$9.00 per 100.

CAPTAIN FRYATT. Dark ruby-violet with violet-blue center, strong reflexed petals. The only Tulip of this color. This is a most attractive lily flowered Tulip. 3 for 50¢; \$1.35 per dozen; \$9.00 per 100.

MARCELLINA. 24 inches. Glorious rosy red with pure white center, reflexing petals. A very graceful novelty. 3 for 50¢; \$1.35 per dozen; \$9.00 per 100.

WHITE TRIUMPHATOR. 26 inches. This is the largest, the strongest and most beautiful of all Lily Flowering varieties. The strongly reflexed petals make a marvelous show. Very substantial and long lasting. 3 for 50¢; \$1.35 per dozen; \$9.00 per 100.

Peonies

The best time for planting Peonies is during October. The roots should be set so that the top or upper eyes are about 1 to 2 inches below the level of soil, from 3 to 4 feet apart each way.

95¢ EACH; 3 FOR \$2.50; \$9.00 PER DOZEN

EDULIS SUPERBA. Very early, crown type, clear mauve pink with silvery sheen.

FELIX CROUSSE. Rose type, brilliant ruby-red. One of the best, most popular kinds.

KARL ROSENFELD. Very large flower; globular semi-rose type. Extremely vigorous grower; tall and free flowering. As an early red, it has no equal.

REINE HORTENSE. A uniform hydrangea-pink with guard and center petals marked crimson. This is a variety that gives universal satisfaction and is both a show and garden variety. The plant is tall with long, stiff stems. The flowers are slightly fragrant. A mid-season variety.

FESTIVA MAXIMA. Paper-white, crimson markings to center; very large and full rose type; very tall. Early.

MONS. JULES ELIE. The peerless pure pink. Broad reflexing guards with a high pyramidal body of semi-quilled petals converging into an apex. One of the largest, handsomest and most lasting cutting sorts in existence.

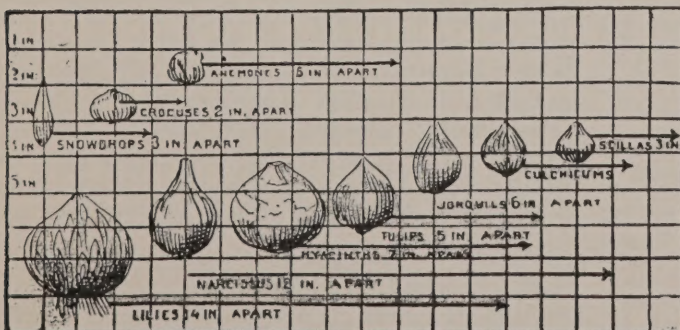
SARAH BERNHARDT. A late blooming semi-rose type; flowers of remarkable size. Beautiful mauve-rose with silvery tips.

PEONIES BY COLOR

RED, WHITE and PINK

75¢ Each; 3 for \$2.00; \$7.00 Per Dozen

Planting Chart for Bulbs



BULB PLANTER



The "Hole-in-One" Bulb Planting Tool. Removes the soil up to a depth of five inches, making a perfect planting hole for many kinds of bulbs.

Postpaid, \$1.25

Not Postpaid, \$1.00

Narcissus or Daffodils



Among the early spring flowers these are in the front rank of popularity. Appearing just after winter, they animate our gardens with masses of gold and silver, while their fragrant blossoms in the home are invaluable for decorative purposes.

CULTURE OUT-OF-DOORS. All varieties of Narcissus should be grown in clumps and patches in every suitable spot, and there is not a spot where grass will grow in which Narcissus will not succeed. In planting be guided by the size of the bulb, allowing 4 to 5 inches between small sorts and 6 to 8 inches between large varieties. The bulbs will soon completely fill the space, forming a compact mass, and it is then their flowers are produced the most freely. Plant about 5 inches deep, according to the size of the bulb.

Large Cup Varieties

BRUNSWICK. Well overlapping white perianth. Crown clear icy white, gradually changing to greenish lemon at the brim. 3 for \$1.00; \$3.00 per dozen; \$20.00 per 100.

CARLTON. A fine clear yellow of great size. Flat overlapping perianth and a large expanded cup frilled at the brim. Sturdy plant of great vigor. 3 for 50¢; \$1.40 per dozen; \$9.00 per 100.

FORTUNE. Recognized as the best Daffodil of its type. It has a beautiful color of clear deep lemon-yellow and a splendid flat, overlapping perianth with a very large and long bold cup of coppery red orange, a 2 foot stem and perfect carriage. 3 for 60¢; \$1.50 per dozen; \$10.00 per 100

SELMA LAGERLOF. Broad, rounded, overlapping creamy white perianth, wide, flat, golden crown, shading to deep tangerine at the brim. Flowers are very large, exceedingly showy and of excellent quality. Really spectacular, holds its color well, valuable for garden and exhibition. The startling contrast between petals and crown makes it outstanding. 3 for 55¢; \$1.50 per dozen; \$10.00 per 100

QUIRINUS. Large deep yellow perianth, well formed cup of most intense fiery red, tall stem, strong grower. 3 for 60¢; \$1.50 per dozen; \$10.00 per 100.

DAISY SCHAEFFER. One of the best of the remarkable Giant Leeds type; the flower 4½ inches across, with cup nearly 2 inches. Resembles a Giant Trumpet but much more graceful in form; perianth pure white, with cup opening primrose and turning to light canary-yellow deeper at the base. Long lemon-yellow stigma and styles add to the color harmony. 3 for 60¢; \$1.50 per dozen; \$10.00 per 100

DICK WELLBAND. White semi-overlapping perianth, deep orange-red cup of remarkable quality; does not fade. 3 for 55¢; \$1.50 per dozen; \$10.00 per 100.

FLOWER RECORD. A recent introduction, which produces a bold, large flower with large pure white perianth and a large expanding crown of orange with bright orange at margin. We do not know any other variety producing such a mass of flowers. 3 for 70¢; \$1.80 per dozen; \$12.00 per 100.

NARCISSUS or DAFFODILS—Continued



Poetaz Type

CHEERFULNESS. Clearly defined perianth of good white, semi-double cup of white and yellow. Two to five flowers per stem. 3 for 45¢; \$1.20 per dozen; \$8.00 per 100.

GERANIUM. Large, pure white perianth, with beautiful orange-red cup, four to six flowers on a stem. 3 for 50¢; \$1.40 per dozen; \$9.00 per 100.

ORANGE WONDER. Four to eight very large red and white flowers per stem. Another outstanding introduction and improvement on older varieties. 3 for 45¢; \$1.20 per dozen; \$8.00 per 100.

YELLOW CHEERFULNESS. A lovely soft yellow sport of the ever popular white Cheerfulness. 3 for 45¢; \$1.20 per dozen; \$8.00 per 100.

ADA FINCH. Very large white trumpet Daffodil. Trumpet slightly fringed. Highly recommended. 3 for 90¢; \$2.50 per dozen; \$17.50 per 100.

BACKHOUSE GIANT. An improved variety of Mrs. R. O. Backhouse; Perianth ivory white, apricot pink fringed trumpet. 3 for 80¢; \$2.25 per dozen; \$15.00 per 100.

DUTCH MASTER. This Daffodil has an overlapping and flat perianth with a large trumpet nicely fringed at the mouth. This perfect flower is golden yellow throughout. 3 for 75¢; \$2.00 per dozen; \$14.00 per 100.

PEEPING TOM. The largest yellow cyclamineus variety in existence. Very early, long lasting flower. 3 for \$1.00; \$3.00 per dozen; \$20.00 per 100.

FLOWER CARPET. This is an improved King Alfred, producing nearly twice as many flowers of a rich golden yellow. A Daffodil with a great future. 3 for 60¢; \$1.50 per dozen; \$10.00 per 100.

JULES VERNE. The finest of all bi-color Daffodils, large pure white perianths and an enormously large soft lemon yellow trumpet. Something Special. 3 for 70¢; \$1.80 per dozen; \$12.00 per 100.

KING ALFRED. One of the finest and largest deep golden trumpet varieties. A tall, strong grower, with magnificent frilled trumpet and large perianth. All of a rich golden yellow. Jumbo size, 3 for \$75¢; \$2.00 per dozen; \$14.00 per 100; Large size, 3 for 45¢; \$1.20 per dozen; \$8.25 per 100.

LORD WELLINGTON. Very large magnificent deep golden yellow flower with broad petals and a large trumpet; tall stiff stem. Much larger and ten days later than King Alfred. Large size, 3 for 70¢; \$1.80 per dozen; \$12.00 per 100.

Poeticus Type

ACTAEA. Broad overlapping white perianth of great substance and fine form. The large flat cup has a broad margin of the deepest red. Rated the largest and best Poeticus. 3 for 45¢; \$1.20 per dozen; \$8.00 per 100.

NARCISSUS or DAFFODILS—Continued

JONQUILS

TREVITHIAN. Large cluster of large flowers, fine lemon-yellow. 3 for 50¢; \$1.40 per dozen; \$9.00 per 100.

JONQUILLA SIMPLEX. Dainty heads of small rich, golden yellow flowers, much praised for their delicious scent. 3 for 40¢; \$1.20 per dozen; \$8.00 per 100.

THIANDRUS THALIA. In addition to a peculiar attraction at first sight, this flower leaves one with an impression that it is white, yet it is a whiteness that is not white. The recurving petals and the angle of the three trumpets are unlike the conventional short-cupped Daffodil. The stem is dark green, round and reedlike thin. Some call it the "Orchid-flowered" Narcissus, which adds to the mystery. Thalia provides unusually good material for artistic arrangements. 3 for 60¢; \$1.80 per dozen; \$12.00 per 100.

MOUNT HOOD. Immense flowers, with pure white perianth, large ruffled trumpet opens deep primrose, changing to creamy white then to purest white. The largest flowered of this group. A "must" for your garden. 3 for 70¢; \$1.80 per dozen; \$12.00 per 100.

MRS. R. O. BACKHOUSE. Silvery white perianth; trumpet heavily tinted soft apricot-pink, changing to shell-pink at the deeply cut edge. This is the famous "Pink Daffodil." Delightful fragrance adds to its unique charm and daintiness. 3 for 60¢; \$1.50 per dozen; \$10.00 per 100.

MUSIC HALL. A very large bi-color with pure white perianth, golden yellow trumpet, medium yellow. 3 for 50¢; \$1.40 per dozen; \$9.00 per 100.

THE FIRST. A very early clear yellow Daffodil. May be planted outside or forced in the green-house. 3 for 50¢; \$1.40 per dozen; \$9.00 per 100.

BEERSHEBA. Perianth and trumpet of magnificent proportions. Sturdy foliage and stem, height 20 to 22 inches. It's color is pure white and expressive of purity in the highest sense. Those who are forming collections of fine Narcissus rate Beersheba at the top of the large white Trumpets. 3 for 60¢; \$1.80 per dozen; \$12.00 per 100.



GERTIE MILLAR. Wonderful flower of the new Giant Leeds type with pure white perianth similar to and as large as Van Waveren's Giant, a beautifully proportioned pale primrose cup, deeply fluted and frilled, and of translucent texture. 3 for 60¢; \$1.50 per dozen; \$10.00 per 100.

GOLDEN HARVEST. An all golden yellow trumpet variety of fine form. An improvement over the older variety, Golden Spur. Very early blooming, both in the garden and for forcing. Large size, 3 for 70¢; \$1.80 per dozen; \$12.00 per 100.

WARWICK. One of the very few true orange Trumpet Daffodils ever produced. 3 for 70¢; \$2.00 per dozen; \$14.00 per 100.

LARGE FLOWERING, MIXED. Made up of named sorts, excellent for growing in masses, for garden decorations and fine for cut flowers. \$1.20 per dozen; \$8.00 per 100.

NARCISSUS or DAFFODILS—Continued

Double Varieties

INGLESCOMBE. The outstanding **Double Daffodil**. Its color is of the purest yellow without blemishes of any kind, unlike the older types which were marred with green in the petals. It keeps its pure color to the very last. Of the doubles, we feel we are offering you the best there is to be had. 3 for 60¢; \$1.50 per dozen; \$10.00 per 100.



MRS. WILLIAM COPELAND. Very large and pure white perianth, the cup segments are almost white, a creamy tint which fades to white; a splendid flower and good increaser. 3 for 60¢; \$1.80 per dozen; \$12.00 per 100.

TWINK. Semi-double, primrose with inner petals of light orange. Very strong stem. Early. 3 for 50¢; \$1.40 per dozen; \$9.00 per 100.

Narcissus for Naturalizing

Suitable for garden display, woodland plantings or cutting. Practically any soil has been found suitable, and they are grown equally well in the open as among trees and in woodland. Contains a mixture of large Trumpets, Leedsis, Barri, Poeticus and Poetaz types, making a mixture that cannot be beaten for value.

90¢ per dozen; \$6.00 per 100

Dutch Iris

The flowers of **Dutch Iris** are broader, the falls usually wider apart and the lips larger than the Spanish type. Two weeks earlier, blooming right after the Cottage Tulips. They are wonderful for cutting, opening nicely even if cut in bud, and lasting a long time.

All Varieties: 3 for 25¢; 65¢ Per Dozen;
\$4.00 Per 100

BLUE RIBBON. Deep blue.

BRONZE QUEEN. Bronze standards and falls with orange-bronze spots on each fall.

IMPERATOR. The finest, largest Iris for all purposes. A strong growing, free blooming, clear blue Iris.

GOLDEN HARVEST. Deep golden yellow, extra large. Very early.

JEANNE D'ARC. Enormous creamy white Iris with yellow blotch on the falls.

LEMON QUEEN. Beautiful lemon-yellow standards, slightly crenated yellow falls.

SUNSHINE IRIS. Large yellow, with orange falls. Suitable for gardens and cutting.

SAXE BLUE. Standards delft blue. Falls lighter blue with orange-yellow blotch.

WEDGEWOOD. Standards blue, falls beautiful pale blue with a yellow blotch.

WHITE SUPERIOR. Uniform pure white with a thin sulphur-yellow line on the falls.

WOOD'S SPECIAL MIXED DUTCH IRIS
50¢ Per Dozen; \$2.50 Per 100

Hyacinths

One of the Earliest Spring Flowers

CULTURE IN POTS. Use any good soil, mixed with sand, potting so as to leave the top of the bulb even with the soil. For a single plant use 4 or 5-inch pot, but the effect will be prettier if several bulbs are planted in a larger pot, and still more effective if all are of one color. Press the soil firmly around the bulbs, but do not pack it underneath. Sink the pot in the earth about 6 inches, covering with soil, choosing a location that is not too wet. For a succession of blooms, bring the first out about December 1st, and every two weeks thereafter, until February 1st. Keep moderately warm and when they begin to bloom, give plenty of water and as much fresh air as possible. Too much heat dries up the flower and shortens the blooming period.

CULTURE IN OPEN GROUND. Any good garden soil will suit. If clay or very heavy, do not cover more than 3 inches; if light, from 4 to 6 inches. Protect with manure, leaves or coarse litter to prevent freezing.

ANNE MARIE. A beautiful tall pure pink spike, very early, easily forced.

CITY OF HAARLEM. A very beautiful large, pure yellow compact bloom of fine form and substance. The best yellow Hyacinth for bedding and pots.

DELFT BLUE. Magnificent porcelain blue variety, strong spike with fleshy large bells. Very attractive color. Easily forced.

KING OF THE BLUES. A very dark blue, bearing a splendid spike with large bells; excellent for late forcing or bedding.

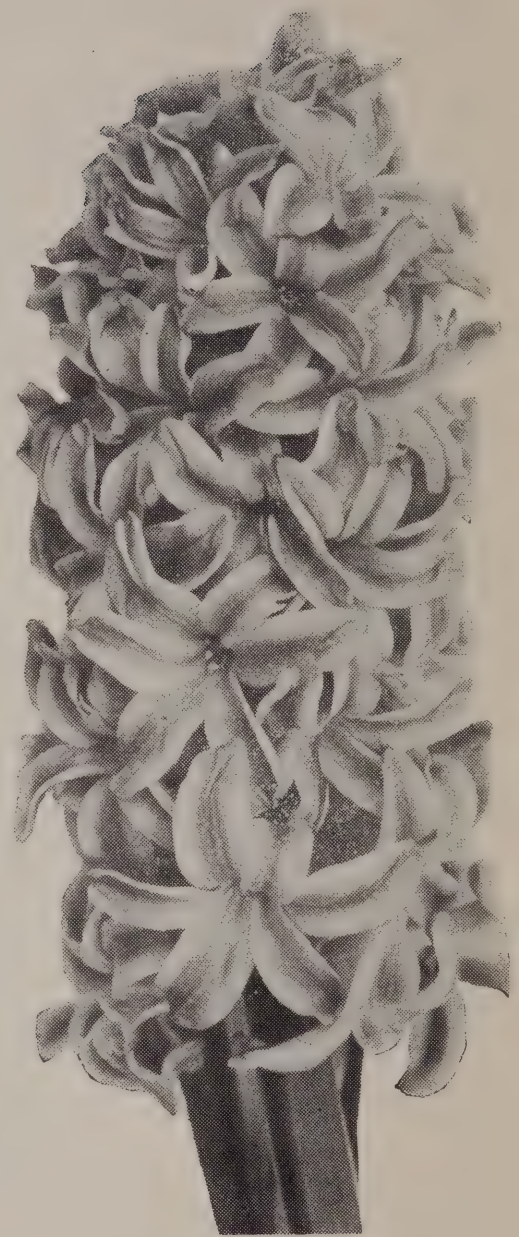
LA VICTOIRE. Brilliant rose-crimson; when forced a fine dark pink. This variety grows a large spike of perfect form and is unsurpassed for all purposes.

L'INNOCENCE. Pure white, fine large truss, produced on a strong stem with large bells of great beauty and substance. The best white Hyacinth for massive bedding and forcing.

MARCONI. Bright deep rose, faintly shedded rosy white, producing a large broad spike, borne on a stiff stem; particularly good for bedding.

OSTARA. Pure blue all over, lightly tinted violet inside; easy and excellent Christmas forcer; good spike.

PINK PEARL. One of the finest new clear pink Hyacinths. It is a valuable improvement of Gertrude, a large spike with closely set bells of a very distinct rose-pink; a splendid bedder and a very good one for indoors.



QUEEN OF THE PINKS. Lovely bright rosy pink, large spike of fine bells; late forcer. Also good for bedding.

The Above Hyacinths May Be Had in
Two Sizes

WOOD'S EXHIBITION HYACINTHS
EXTRA LARGE BULBS

35¢ each; \$3.00 per dozen; \$20.00 per 100.

WOOD'S SUPERIOR BEDDING
HYACINTHS

3 for 65¢ \$2.00 per dozen; \$13.50 per 100

ROMAN HYACINTHS

BLUE, WHITE and PINK

The flowers, while smaller than those of the Dutch Hyacinths, are borne in much greater abundance, each producing about 6 graceful spikes of blooms, which makes it a most valuable sort for cutting. They can be forced very easily, and if planted early and brought into the house at intervals of about two weeks, will yield a succession of blooms from Christmas to Easter.

WHITE ROMAN HYACINTHS—3 for 75¢;
\$2.50 per dozen; \$18.00 per 100.

PINK ROMAN HYACINTHS—3 for 75¢;
\$2.50 per dozen; \$18.00 per 100.

BLUE ROMAN HYACINTHS—3 for 60¢;
\$1.80 per dozen; \$12.00 per 100.



LYCORIS—Hardy Amaryllis

May be planted in early fall or during the spring months. Plant carefully, not too deeply. Foliage does not appear until spring. Then it grows rather vigorously for a short season and fades. It is a pleasant surprise in the early autumn, when heavy stalks bear large lily-like flowers. Ready for immediate delivery.

AUREA. A beautiful yellow variety. It is well suited for planting outside. 3 for 90¢; \$3.00 per dozen.

RADIATA. A well known red variety. It is also known as Spider Lily or Nerine. 3 for 60¢; \$1.75 per dozen.

RADIATA ALBIFLORA. A very rare and beautiful creamy white variety. 3 for \$1.25; \$4.00 per dozen.

SANGUINEA. Orange-crimson flower in loose cluster. 3 for 90¢; \$3.00 per dozen.

SQUAMIGERA. A very tall pink variety. Flowers in the late summer. 3 for 90¢; \$3.00 per dozen.

No. 15-8 Parrot Head Pruner



For heavy duty, all-purpose pruning and larger cutting capacity. Not postpaid, \$3.25. Postpaid, \$3.50.

Giant Hybrid Amaryllis

A reselected strain of the very largest flowered sorts, ranging in color from almost pure white through various shades of pink to the deepest scarlet, some with beautiful markings and mottled throats. Can supply in mixed colors only. Ready November 1st. 3 for \$1.25; \$4.25 per dozen.

Imported Holland-Grown Amaryllis

EASY TO GROW IN YOUR HOME

Breathtakingly beautiful. In White, Red, and Pink. A rare imported Dutch Amaryllis Bulb, complete with planting instructions. These easy-to-grow bulbs produce three or more huge lily-like flowers on a single stem. The flowers are from six to eight inches in diameter. Makes a delightful Christmas gift.

Extra large Bulbs, \$2.50 each, \$3 for \$5.00

No. 75-26 Long Handle Heavy Duty Pruner



Built to make extra heavy pruning easy. Handles 20 inches long. Postpaid, \$5.00. Not postpaid, \$4.60.

Hardy Lilies



These are unsurpassed by any of the class of hardy plants. They begin flowering in May and the various species continue in uninterrupted succession until autumn. Can be planted in the garden either in the fall or early spring; fall planting is better.

CANDIDUM (Annunciation, Madonna, or St. Joseph's Lily). Chateau De Narce strain, Northern French grown. An old favorite garden Lily with snow white, fragrant blooms. It is good for forcing and blooms in the open ground in May. 'Ready in September. **Large bulbs, 50¢ each; \$5.00 per dozen. Jumbo Bulbs, 90¢ each; \$9.00 per dozen.**

ESTATE (the Outdoor Easter Lily). A pure white Lily of Easter Lily type, growing 3 to 4 feet in height, producing 4 to 6 large blooms. Ready November 1st. **50¢ each; \$5.00 per dozen.**

FIRE KING. A striking Indian-red that catches the eye. The flowers are of great substance, facing straight outwards. Healthy glossy foliage combine to make this a very desirable Lily. **95¢ each; 3 for \$2.65; \$9.50 per dozen.**

TIGRINUM SPLENDENS (Improved Tigor Lily). Very hardy Lily, bright orange-red, spotted black. Blooms August. Ready December 1st. **35¢ each; \$3.50 per dozen.**

TIGRINUM FLORE PLENO (Double Tiger Lily). Handsome double flowers. Same color as Tigrinum Splendens. Blooms August. Ready December 1st. **40¢ each; 4.00 per dozen.**

UMBELLATUM. Orange. A very free flowering Lily of easy culture. Carries large blooms of light orange-red flowers. Blooms in June. Ready December 1st. **45¢ each; \$4.50 per dozen.**

WILLMOTTIAE IMPROVED. Has large flowers of vivid orange-red, covered with small dark brown spots. Height 5 to 6 feet. Blooms in August. Ready November 1st. **40¢ each; \$4.00 per dozen.**

BLEEDING HEART

(**DIELYTRA SPECTABILIS**). One of the the most showy of the old-fashioned flowers. The flowers are heart shaped, vary from light pink to a rosy crimson color, and are produced in sprays along the stem. They can be grown in either shady or sunny places, although they are more at home in the shade. Ready November 15th. **Large roots, 90¢ each; 3 for \$2.25; \$8.00 per dozen.**

PARDALINUM GIGANTEUM. This is one of the easiest Lilies to cultivate. It is vigorous, dependable, very hardy and multiplies rapidly. The base of the flower is yellow with petals of sunset-red, spotted with small brown dots. Height 5 to 6 feet. Blooms in July. Ready in December. **60¢ each; \$6.00 per dozen.**

PHILIPPINENSE FORMOSANUM. This Lily bears 3 to 5 blooms at a time, of beautiful white flowers with emerald-green throat. Blooms from August until frost. Ready December 1st. **30¢ each; \$3.00 per dozen.**

REGALE. Pure waxy white with yellow throat. One of the finest of all hardy Lilies. Blooms June and July. Ready in November. **Large Bulbs, 40¢ each; \$4.00 per dozen. Jumbo Bulbs, 65¢ each; \$6.50 per dozen.**

SPECIOSUM RUBRUM. Delicate pink, almost white, spotted with red; flowers in August. Ready December 1st. **Large Bulbs, 70¢ each; \$7.00 per dozen.**

TENUIFOLIUM (Coral Lily). Handsome bright scarlet flowers, borne on slender stems. Excellent for rock gardens. Blooms May and June. Ready December 1st. **25¢ each; \$2.25 per dozen.**

Bulbs for the Rock Garden

SPARAXIS

(Also Known as Wandflower)

May be planted in the fall or spring. If planted in the fall, they should have a covering of peat moss or leaves.

FIRE KING SPARAXIS. Orange-scarlet. 3 for 25¢; 55¢ per dozen; \$3.00 per 100.

SNOWDROPS

The first flower to proclaim the coming of spring; frequently blooming in the snow. The pure white, bell-shaped blooms come before winter departs. 85¢ per dozen; \$5.00 per 100.

ANEMONES

Anemones should be planted the latter part of October, 3 inches deep and about 6 inches apart. They will do well on any well drained loam soil so long as it is not lacking in lime.

ST. BRIGID (Semi-Double). Mostly double with finely divided petals, and the most brilliant and varied shades, all having a handsome blue-black central base. Very graceful 75¢ per dozen; \$4.50 per 100.

DE CAEN. Taller in growth than the St. Brigid and more single. They contain many fine shades of blue, white and scarlet. 75¢ per dozen; \$4.50 per 100.

Single Flowered Anemones

3 for 30¢; 75¢ Per Dozen; \$4.50 Per 100

HIS EXCELLENCY. Brilliant deep scarlet. Large flowers on long stems.

MR. FOKKER. Deep Blue, very large flowers.

SYLPHIDE. Large deep violet flower.

THE BRIDE. Very large pure white flowers.

RANUNCULUS

Plant and treat same as Anemones.

Mixed Colors, 65¢ per dozen; \$4.00 per 100

CHIONODOXA

GLORY OF THE SNOW. One of the earliest of our spring flowers. Bright blue with large clear white center. 45¢ per dozen; \$2.75 per 100.

LEUCOJUM

VERNUM (Snowflake). A white flower, resembling the Snowdrop, but much larger. Plant in clumps, 3 inches deep. 3 for 45¢; \$1.20 per dozen; \$8.00 per 100.

MUSCARI

ARMENIACUM. Bright deep blue, larger than the well known Heavenly Blue. A good variety for planting outdoors or forcing. 55¢ per dozen; \$3.00 per 100.

BOTRYOIDES ALBUM (White Grape Hyacinth). Bearing pretty little fragrant pure white flowers, valuable for the garden and for pot culture. 55¢ per dozen; \$3.00 per 100.

PLUMOSUM (Ostrich Feather). Producing in May splendid spikes of a violet-blue color; the flowers have the appearance of a feather plume, very attractive and interesting. \$1.35 per dozen; \$9.00 per 100.

SCILLA

CAMPANULATA (Wood-Hyacinth). Bears spikes 15 inches high of bell-like flowers, during early May. Plant 5 or 6 inches deep in shady situation. Very effective for borders; will grow under fir or pine trees. White, Blue and Rose. 75¢ per dozen; \$4.25 per 100.

SCILLA SIBERICA. Spring Beauty. Large delft blue blooms on spikes 4 to 5 inches high; fine for massing in borders or naturalizing. Plant 3 to 4 inches deep. Blooms outside in April. 85¢ per dozen; \$6.00 per 100.

Crocus LARGE BULBS

65¢ Per Dozen; \$4.00 Per 100

One of the earliest blooming spring flowers and very effective in lawns and borders. They are also very useful to plant in Hyacinth or Tulip beds between the rows. Set the bulbs 2 inches deep and 2 to 3 inches apart and plant as early in the fall as possible.

MONT BLANC. Pure white, tall; very fine.

PURPUREA GRANDIFLORA. Purple. The largest in this color.

QUEEN OF THE BLUES. A very fine light blue.

SIR WALTER SCOTT. Striped.

MAMMOTH YELLOW. Golden yellow. Very large.

MIXED CROCUS. 50¢ per dozen; \$2.75 per 100.

Bulbs for Indoor Culture



Paper White Narcissus for Growing in Water

Double Hyacinths

BEN NEVES. The best of all Double Hyacinths. Pure white flowers on short stems with enormous trusses loosely set. This Hyacinth flowers 10 days earlier than most of the single Hyacinths. May be grown in water after December 1st.

Large Exhibition Bulbs, 40¢ each; \$3.50 per dozen; \$20.00 per 100. Bedding Size Bulbs, for outdoor planting, 3 for 65¢; \$2.00 per dozen; \$13.50 per 100.

Gloxinias

Makes a very satisfactory and most unusual house plant when planted in pots and bowls. The plants may also be set in rock garden in semi-shaded places after danger of frost. Do not over water, but keep the soil slightly moist at all times. May be had in the following colors: Scarlet, Violet, White, Scarlet and White, Violet and White. Ready November 25th. 3 for \$1.20; \$4.00 per dozen.

French Grown Paper White Narcissus

The Most Satisfactory Winter-Blooming House Plant

They will bloom in water from 6 to 8 weeks from time of planting if not planted too early. The flowers are large, attractive in color and very fragrant. A very unique and simple way to grow them is to place 6 or 8 bulbs in a shallow bowl with water, support the bulbs with pebbles and place the bowl in the dark until the roots have started, when they should be brought into the light. Change the water occasionally to keep it pure. From our experience, November, December and January plantings give best results.

3 for 60¢; \$1.50 per dozen; \$10.00 per 100

French Grown Rising Sun Narcissus

This is a yellow Narcissus, exactly like the Paper White, except the flowers are large yellow instead of white, requires about two weeks longer to bloom. Give the same treatment as the Paper White Narcissus.

3 for 90¢; \$2.75 per dozen; \$20.00 per 100

Colchicum

A bulb that you don't have to plant. Will bloom in from two to three weeks. Just place the bulb on window sill and they produce beautiful lavender-pink, crocus-like blossoms, 1½ to 2 inches in diameter. After blooming the bulbs may be planted outside, where they will make very pretty foliage in the spring. Order early, as our supply is limited.

3 for \$1.25; \$4.25 per dozen

Oxalis

One of the finest winter-flowering bulbs grown. A single plant well grown will fill a 6-inch pot, throwing up 50 to 70 stems, which bear an immense number of flowers.

BERMUDA BUTTERCUP. Bright yellow.

3 for 30¢; 75¢ per dozen; \$5.00 per 100.

GRAND DUTCHESS. Pink, Lavender and White. 3 for 30¢; 75¢ per dozen; \$5.00 per 100.

Fertilizers

New Golden Vigoro

This newly developed complete lawn food will not burn grass when used in recommended amounts. Non-burning Golden Vigoro contains all the food elements specifically needed to develop the finest deep-rooted grass. Golden Vigoro is so sanitary, clean and odorless it can be applied at any time. No raking or watering is necessary. 25 lbs. \$2.60; 50 lbs. \$3.95.

Regular Vigoro

This complete plant food contains all the elements plants need from soil for best growth. It's the leader in the field. Carefully formulated to insure top results when used on flowers, trees, shrubs and vegetables. 5 lbs. 58¢; 10 lbs. \$1.00; 25 lbs. \$1.75; 50 lbs. \$2.65; 100 lbs. \$4.95.

Farmanure

Farmanure contains only nature's own products—cow manure, poultry manure and peat moss—all perfectly blended in the correct proportions to assure better growth—better garden results. 7½ lbs. 70¢; 25 lbs. \$1.50; 50 lbs. \$2.65.

Fertil-Gro Cow Manure

A natural fertilizer. Very effective on lawns—new or old. It improves the soil and adds fertility to same, is thoroughly pulverized and treated to a high degree of heat temperature to kill weed seeds. 10 lbs. 75¢; 25 lbs. \$1.15; 50 lbs. \$2.00; 100 lbs. \$4.00.

Bone Meal

Very lasting in effect and used by makers of new lawns or in top dressing old lawns. Use 50 pounds to the 1,000 square feet for new lawns, and half of that quantity as top dressing. 5 lbs. 60¢; 10 lbs. \$1.00; 25 lbs. \$2.00; 50 lbs. \$3.25; 100 lbs. \$5.75.

Baccto Michigan Peat

½ pk. 59¢; 1 pk. 98¢; 25 lbs. \$1.69; 50 lbs. \$2.49; 100 lbs. \$4.49

Peat Moss

1-peck bag, 60¢; 3-peck bag, \$1.00; ¾ cu. ft. \$1.65; 1½ cu. ft. \$2.55; 4 cu. ft. bale, \$3.75; 6 cu. ft. bale, \$4.65; 7 cu. ft. bale, \$1.95.

Milorganite

The All Organic Fertilizer. Nitrogen 5%; Phosphoric Acid 4%. Will not burn. For old lawns use 3 to 5 pounds per 100 square feet. Apply both spring and fall. 40 lbs. \$2.00; 100 lbs. \$4.00.

Wood's Special All-Crop Fertilizer

Analysis: 5% Nitrogen, 10% Phosphoric Acid, 5% Potash. The ideal complete fertilizer for all lawns and gardens. 25 lbs. \$1.00; 100 lbs. \$2.65.

Pine Needle Mulch

Cleaned and sprayed with Malathion. The perfect mulch for azalias, camellias, boxwoods and evergreens. Bale of 7 cubic feet (80 pounds), \$2.95 per bale.

Hydrated Lime

10 lbs. 35¢; 50 lbs. \$85¢

Pulverized Limestone

100 lbs. 90¢; 500 lbs. \$4.00; \$14.00 per ton.

Richmond 10-10-10

25 lbs. \$1.25; 50 lbs. \$1.95; 100 lbs. \$3.40

Instant Vigoro

8 ozs. 80¢; 16 ozs. \$1.12; 3 lbs. \$3.00; 25 lbs. \$11.25; 50 lbs. \$19.25

Vigoro for Camellias and Azaleas

5 lbs. 60¢; 10 lbs. \$1.05; 25 lbs. \$1.90; 100 lbs. \$5.75

FULTON'S
PLANTABBS Contains Vitamins
ODORLESS PLANT FOOD TABLETS B1 and analyzes
11% nitrogen, 15%
phosphoric acid and 20% potash, just the proper plant food to encourage a vigorous healthy growth. A complete plant food in odorless, ready-to-use tablet form. Post-paid, 50 tablets, 50¢; 90 tablets, 75¢; 200 tablets, \$1.25; 1,000 tablets, \$3.75. Not post-paid, 50 tablets, 39¢; 90 tablets, 59¢; 200 tablets, \$1.00; 1,000 tablets, \$3.50.

Wood's RAINBOW Collection

DARWIN TULIPS

FIVE EACH, SEPARATELY BAGGED AND LABELLED OF 10 FAMOUS VARIETIES

ALBINO—White

BAFTIGON—Crimson

CLARA BUTT—Salmon Rose

FLAMING BEAUTY—Yellow, red stripes

GOLDEN HARVEST—Yellow

PRIDE OF HAARLEM—Rose

PRINCESS ELIZABETH—Deep Pink

QUEEN OF NIGHT—Black

SCARLET LEADER—Crimson

SCOTCH LASSIE—Lavender

Above 50 Bulbs for \$3.75. 100 Bulbs, 10 Each of the Above, Only \$7.00



T. W. WOOD & SONS

Seedsmen Since 1879.

RICHMOND, VIRGINIA